

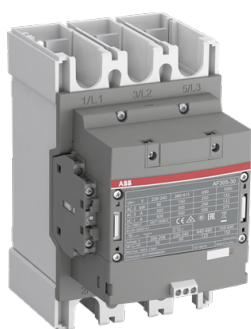
Alternate Catalog No. AF305-30-22-33 Catalog No. 1SFL587002R3322

Description: AF305-30-22-33 Contactor

UPC No 7320500504642

Home > Contactors & Starters > UL Listed IEC Contactors > AF Contactors

A 3-phase Contactor suitable for various applications such as Motor starting, Isolation, By-pass and Distribution application up to max 1000 V. Controlled with PLC and with wide control voltage range 100-250 V, AC/DC



Representative Image

Descriptors

Category	AF Contactors
Block Contactor Type	3-Pole Contactor

Specifications

Product Type	AF
General Use Rating UL/CSA	(600 V AC) 400 A
Object Classification Code	Q
Terminal Type	Main Circuit: Bars
Rated Control Circuit Voltage	50 Hz /60 Hz DC Operation 100 ... 250 V
Number of Main Contacts NO	3
Number of Main Contacts NC	0
Number of Auxiliary Contacts NO	2
RoHS Status	Following EU Directive 2011/65/EU
Reference Ambient Air Temperature	Close to Contactor for Storage -40 ... +70 °C Close to Contactor Fitted with Thermal O/L Relay (0.85 ... 1.1 Uc) -25 ... +55 °C Close to Contactor without Thermal O/L Relay (0.85 ... 1.1 Uc) -40 ... +70 °C
Rated Operational Voltage	Main Circuit 1000 V
Number of Auxiliary Contacts NC	2
Maximum Operating Altitude Permissible	3000 m
Rated Operational Power AC-3	(1000 V) 185 KWT (220 / 230 / 240 V) 90 KWT (380 / 400 V) 160 KWT (415 V) 160 KWT (440 V) 160 KWT (500 V) 200 KWT (690 V) 250 KWT
Rated Breaking Capacity AC-3 acc. to IEC 60947-4-1	8 x Ie AC-3
Conventional Free-air Thermal Current	acc. to IEC 60947-4-1, Open Contactors q = 40 °C 500 A
Rated Frequency	Main Circuit 60 Hz
Rated Short-time Withstand Current	at 40 °C Ambient Temp, in Free Air, from a Cold State 10 s 2440 A at 40 °C Ambient Temp, in Free Air, from a Cold State 15 min 500 A at 40 °C Ambient Temp, in Free Air, from a Cold State 1 min 996 A at 40 °C Ambient Temp, in Free Air, from a Cold State 1 s 3050 A at 40 °C Ambient Temp, in Free Air, from a Cold State 30 s 1409 A

by ABB

Specifications

Rated Operational Current AC-3	(1000 V) 55 °C 131 A (220 / 230 / 240 V) 55 °C 305 A (380 / 400 V) 55 °C 305 A (415 V) 55 °C 305 A (440 V) 55 °C 305 A (500 V) 55 °C 290 A (690 V) 55 °C 290 A
Rated Making Capacity AC-3 acc. to IEC 60947-4-1	10 x I _e AC-3
Maximum Electrical Switching Frequency	AC-1 300 cycles per hour AC-2 / AC-4 150 cycles per hour AC-3 300 cycles per hour
Short-Circuit Protective Devices	gG Type Fuses 500 A
Rated Insulation Voltage	acc. to UL/CSA 600 V acc. to IEC 60947-4-1 and VDE 0110 (Gr. C) 1000 V
Mechanical Durability	5 million
Coil Operating Limits	(acc. to IEC 60947-4-1) U _c (at $\theta \leq 70$ °C)
Maximum Mechanical Switching Frequency	300 cycles per hour
Operate Time	Between Coil De-energization and NO Contact Opening 37 ... 47 ms Between Coil Energization and NO Contact Closing 25 ... 55 ms
Secondary Rated Impulse Withstand Voltage	8 kV
Degree of Protection	acc. to IEC 60529, IEC 60947-1, EN 60529 Auxiliary Terminals IP20

Classifications

ETIM 4	EC000066 - Magnet contactor, AC-switching
ETIM 6.0	EC000066 - Power contactor, AC switching
ETIM 7	EC000066 - Power contactor, AC switching
IDEA Granular Category Code (IGCC)	4755 >> Contactors
ETIM 5.0	EC000066 - Magnet contactor, AC-switching

Dimensions

Product Net Weight	3.9 kg
Product Net Depth / Length	195.5 mm
Product Net Width	140 mm
Product Net Height	225 mm

Package Information

Package Level 1 Width	263 mm
Package Level 1 Height	289 mm
Package Level 1 Depth / Length	203 mm
Package Level 1 EAN	7320500504642
Package Level 1 Units	box 1 piece
Package Level 1 Gross Weight	4.6 kg

Ordering

Minimum Order Quantity	1
Customs Tariff Number	85364900