

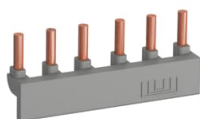
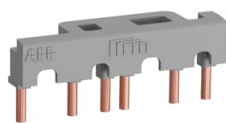
## Alternate Catalog No. BER38-4 Catalog No. 1SBN082311R1000

**Description:** BER38-4 Connection Set for Reversing Contactors

**UPC No** 3471523130784

**Home > Contactors & Starters > UL Listed IEC Contactors > AF Contactors**

Connection sets for reversing contactors The BER and BEM connection sets are used to connect the main poles of two 3-pole contactors mounted side by side. The BER connection sets are made up of 1 upstream and 1 downstream connections. The BEM connection sets are made up of 3 upstream and 3 downstream connections. BER and BEM connection sets are insulated and made of solid copper bars.



Representative Image

### Descriptors

Category	AF Contactors
Block Contactor Type	Accessory

### Specifications

Product Type	AF
Terminal Type	Screw Terminals
RoHS Status	Following EU Directive 2011/65/EU

### Classifications

ETIM 4	EC002498 - Accessories for low-voltage switch technology
ETIM 6.0	EC002498 - Accessories for low-voltage switch technology
ETIM 7	EC002498 - Accessories for low-voltage switch technology
ETIM 5.0	EC002498 - Accessories for low-voltage switch technology

### Dimensions

Product Net Weight	0.1kg
--------------------	-------

### Package Information

Package Level 1 Width	120 mm
Package Level 1 Depth / Length	150 mm
Package Level 1 Units	bag 1 piece
Package Level 3 Units	504 piece
Package Level 2 Gross Weight	1.2 kg

### Ordering

Minimum Order Quantity	1
------------------------	---